

GREATER MANCHESTER POLICE, FIRE AND CRIME PANEL

DATE: Monday, 18th November, 2024

TIME: 2.00 pm

VENUE: The Tootal Buildings - Broadhurst House , 1st Floor, 56
Oxford Street, Manchester, M1 6EU

AGENDA

7. **Police & Crime Plan December 2024 - March 2028** 1 - 2
A report of Deputy Mayor Kate Green.

For copies of papers and further information on this meeting please refer to the website
www.greatermanchester-ca.gov.uk. Alternatively, contact the following

Governance & Scrutiny Officer: Lee Teasdale

✉ Lee.Teasdale@greatermanchester-ca.gov.uk

This agenda was issued on 12th November 2024 on behalf of Julie Connor, Secretary to
the
Greater Manchester Combined Authority, Broadhurst House, 56 Oxford Street,
Manchester M1 6EU

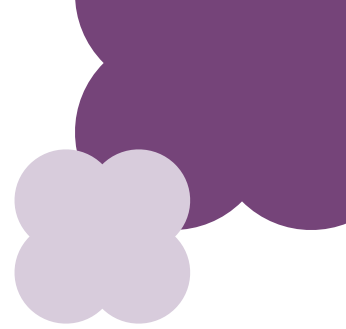
BOLTON	MANCHESTER	ROCHDALE	STOCKPORT	TRAFFORD
BURY	OLDHAM	SALFORD	TAMESIDE	WIGAN

Please note that this meeting will be livestreamed via www.greatermanchester-ca.gov.uk, please speak to a Governance Officer before the meeting should you not wish to consent to being included in this recording.

This page is intentionally left blank

Our mission is to:

- **Keep people safe and support victims**
- **Reduce harm and offending**
- **Strengthen communities and tackle inequality**



We will do this by:

1. Improving public trust and confidence in policing.
2. Increasing accessibility, consistency and responsiveness by the police.
3. Increasing police outcome and charge rates.
4. Improving support for victims of crime, including vulnerable victims, and tackling emerging crime types.
5. Reducing and preventing neighbourhood crime, retail crime and anti-social behaviour.
6. Improving road and transport safety, so people can travel around our city-region safely.
7. Reducing high harm and repeat offending taking a preventative and diversionary approach.
8. Tackling drug, alcohol and wider addictions.
9. Reducing and preventing gender-based violence and all forms of serious violence.
10. Reducing and tackling serious and organised crime.

We will work:

- In partnership, sharing expertise, learning and intelligence.
- Through a problem-solving approach.
- To prioritise early intervention, prevention, and rehabilitation.
- Through local delivery and neighbourhoods.
- Taking a victim-centred approach.
- With the voice of lived experience.
- In a trauma-informed and responsive way.
- Making effective use of technology.
- To progress our equality commitments.
- To communicate what we are doing, regularly updating on our progress.



This page is intentionally left blank